

# ASFC-155-411-B1

Tri Band Whip



## ASFC-155-411-B1

Tri Band Performance

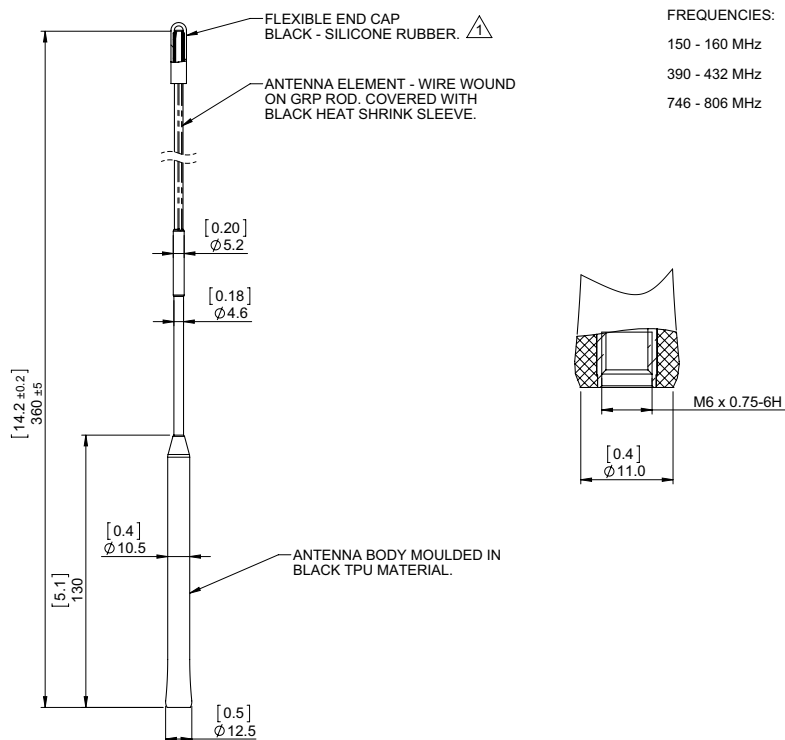
Flexible rod with wound element

Fits Panorama modular & combination bases

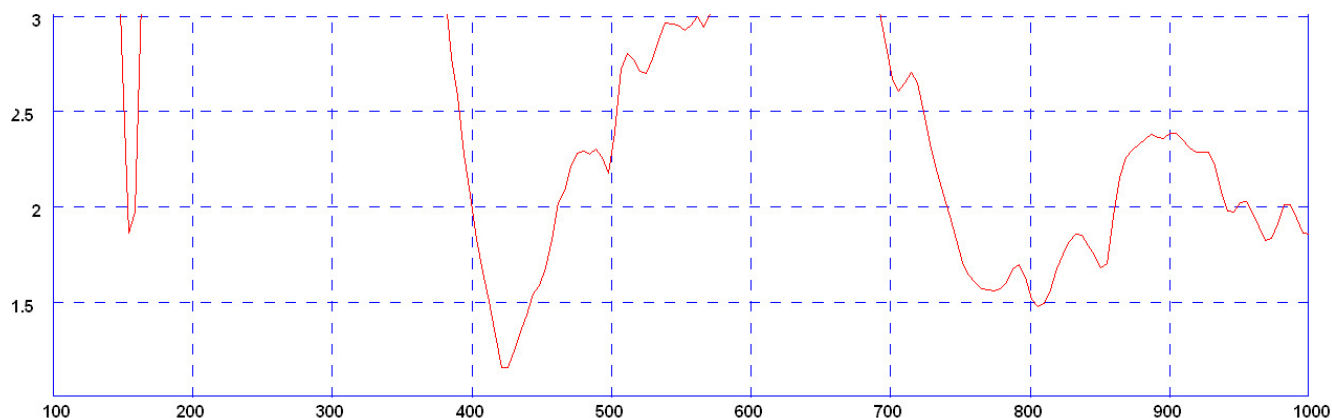
The ASFC-155-411-B1 covers VHF 150-160MHz, UHF 390-430MHz and 746-806MHz. The antenna whip is stylish, discrete and durable featuring a flexible overmoulded base section and a black jacketed flexible wound rod element.

The ASFC-155-411-B1 can be mounted on the GPSD, GPSB and GPSK range of bases.

### Technical Drawing

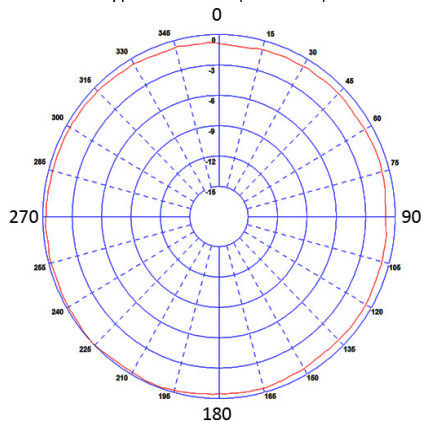


Typical VSWR\*

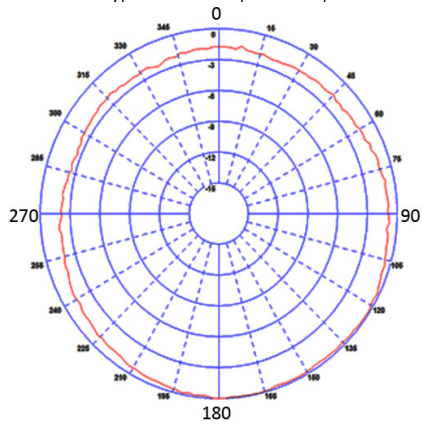


\*Measured on a 3 x 3 ft (1000mm x 1000mm) ground plane with 10ft (3m CS23 cable)

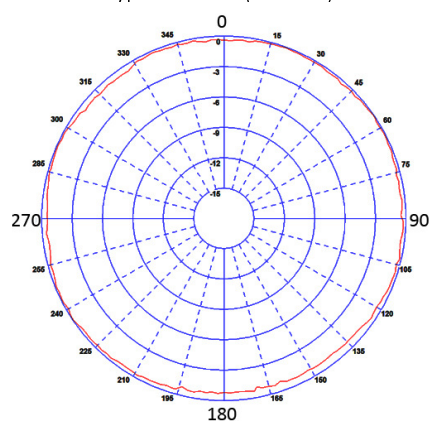
Typical H-Plane (155 MHz)



Typical H-Plane (411 MHz)



Typical H-Plane (780 MHz)



Part No.

ASFC-155-411-B1

### Electrical Data

Frequency Range (MHz)	150-160 / 390-432 / 746-806	
VSWR	< 2.5:1 VHF / < 2:1 UHF / <2:1 7/800	
Peak Gain @ horizon	155MHz	0dBi
	411MHz	2dBi
	800MHz	2dBi
Polarisation	Vertical	
Pattern	Omni-directional	
Impedance	50Ω	
Max Input Power	50	

### Mechanical Data

Dimensions (mm)	Height	360 (14.17")
Terminal	M6 x 0.75	
Operating Temp (°C)	-30° / +80°C (-22° / +176°F)	
Material	Flexible TPU & stainless steel	
Colour	Black	

**Panorama Antennas Ltd**  
Frogmore, London, SW18 1HF, United Kingdom

T: +44 (0)20 8877 4444  
F: +44 (0)20 8877 4477  
E: sales@panorama-antennas.com  
www.panorama-antennas.com

Waiver: The data given above is indicative of the performance of the product/s under particular conditions and does not imply a guarantee of performance. These specifications are subject to change without notice.

Copyright © Panorama Antennas Ltd. All rights reserved.