

MiMo Directional 3.6/5.0GHz Antenna

WMM[X]9G-36-55-NJ



WMM[X]9G-36-55-NJ

- Supports 2x2, 3x3 or 4x4 MiMo across 3.4-3.8/5.0GHz
- Up to 4x wideband elements with gain
- Suitable for mast and rail mounting

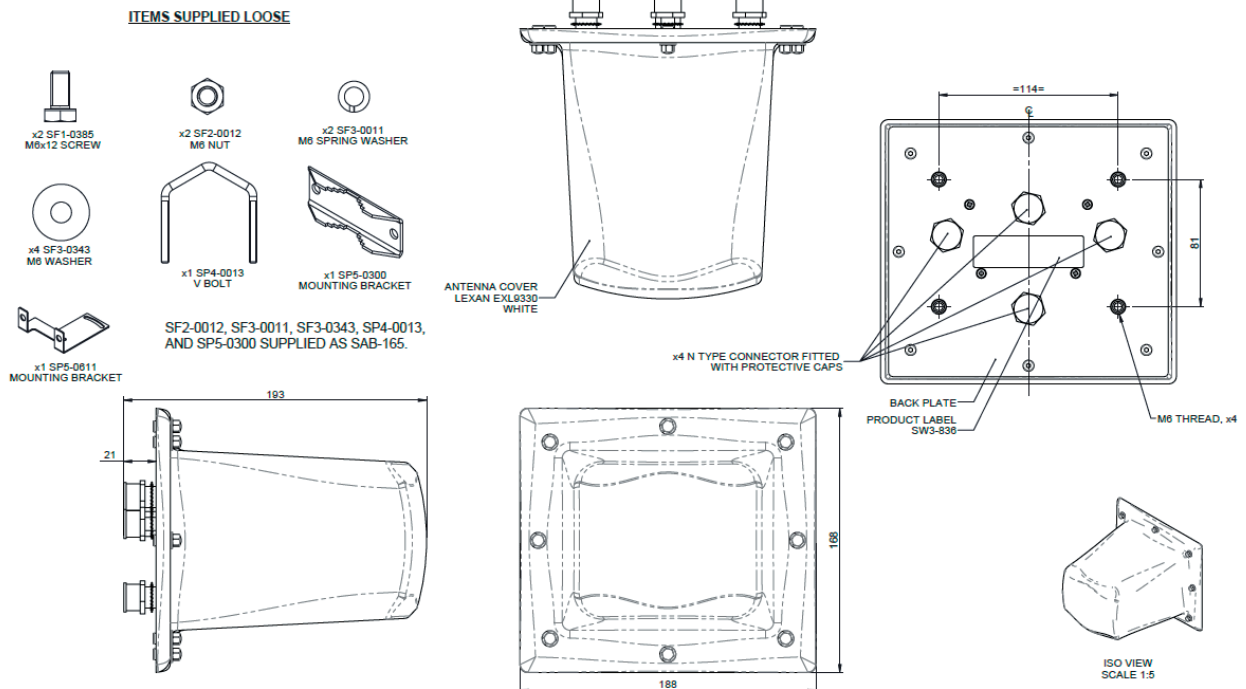
The WMM[X]9G-36-55 is a high directional gain 2x2, 3x3 or 4x4 MiMo antenna for 5G / CBRS / private LTE networks. Incorporating two, three or four separately fed gain element assemblies in a single housing the WMM[X]9G-36-55 is equipped to provide client-side MiMo support for 3.6 and 5.0GHz networks.

The weather-resistant housing is designed for rail or mast mounting. Supplied with fitted N female bulkhead connections for easy installation the product can be fitted with a range of extension cables. The product range is certified to both IP66 and IK10 ideal for external or internal use in tough environments.

The WMM[X]9G-36-55 is a cost-effective value-added product for providing MiMo 3.6/5.0GHz coverage to a room, platform or other areas.

Technical Drawing

WMM49G-36-55-NJ Shown



MiMo Directional 3.6/5.0GHz Antenna

WMM[X]9G-36-55-NJ

PANORAMA ANTENNAS

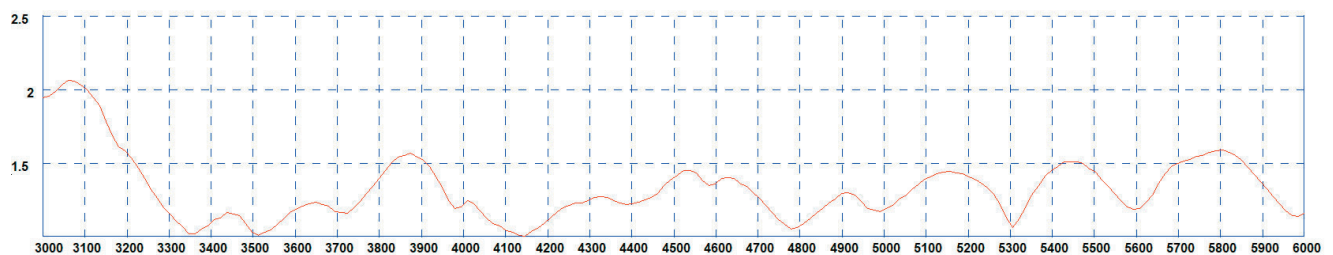
Product Data

Part No.	WMM49G-36-55-NJ	WMM39G-36-55-NJ	WMM29G-36-55-NJ
Electrical Data			
Frequency range (GHz)	4x 3.4-3.8 / 4.9-5.0	3x 3.4-3.8 / 4.9-5.0	2x 3.4-3.8 / 4.9-5.0
Operational bands	4x 3.6/5.0GHz	3x 3.6/5.0GHz	2x 3.6/5.0GHz
Radiation pattern	Directional		
Nominal polarisation	2x Horizontal 2x Vertical	1x Horizontal 2x Vertical	1x Horizontal 1x Vertical
Peak gain (excl cable loss)+	3.4-3.8 GHz	9dBi	
	5-6 GHz	9dBi	
	3.6 GHz H Plane	60	
Typical 3dB beamwidth θ_{+}	5.4 GHz H Plane	65	
	3.6 GHz E Plane	55	
	5.4GHz E Plane	50	
Efficiency - excluding cable loss (all bands)	> 60%		
Correlation co-efficient (all bands)	< 0.2		
Max input power (W)	20 Watts		
Nominal impedance	50Ω		
Mechanical Data			
Dimensions (mm)	Height	168 (6.6")	
	Width	188 (7.4")	
	Depth	193 (7.6")	
Operating temp (°C)	-40° / +80°C (-40° / 176°F)		
Material	Lexan EXL 9330		
Colour	White		
Ingress Protection	IP66		
Vandal Resistance	IK10		
Weight (g)	1250	1185	1120
Mounting Data			
Fixing	Rail mount / mast mount		
Mounting bracket material	Stainless steel / Aluminium		
Pole diameter (mm)	20-50 / (0.78 - 1.96")		
Connector Data			
Type	N female x 4	N female x 3	N female x2

+Peak gain and beamwidth data for each element measured individually based on a vertically polarised element

Electrical Data

Typical VSWR*



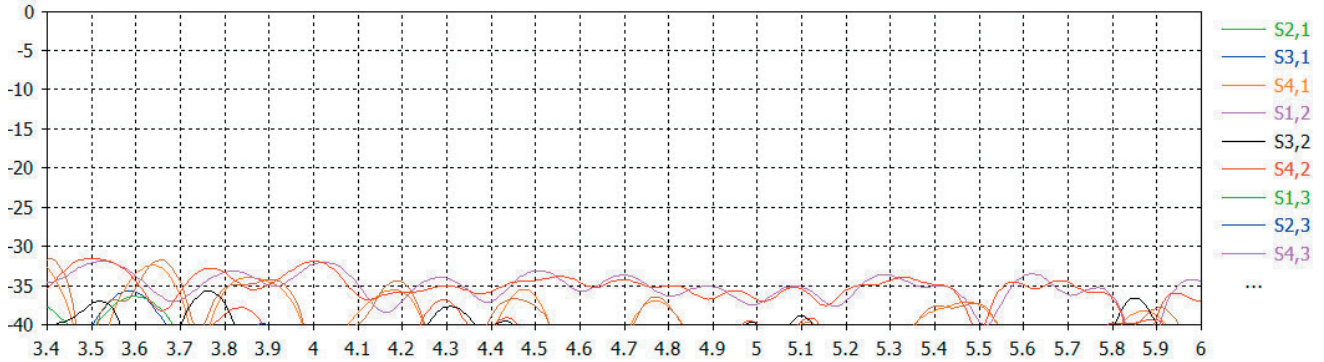
*VSWR of typical element measured in free space without cable

MiMo Directional 3.6/5.0GHz Antenna

WMM[X]9G-36-55-NJ

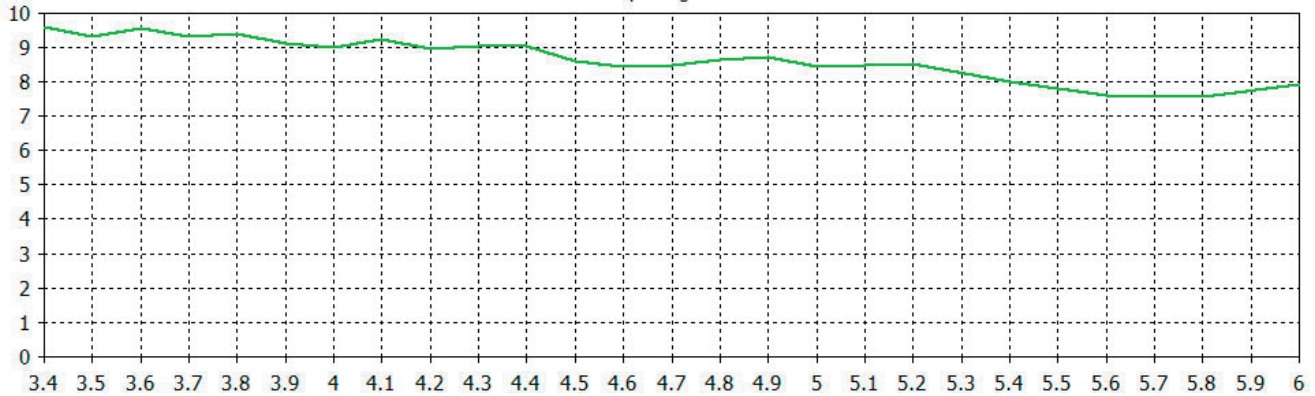
Electrical Data - Cell

Typical Isolation **



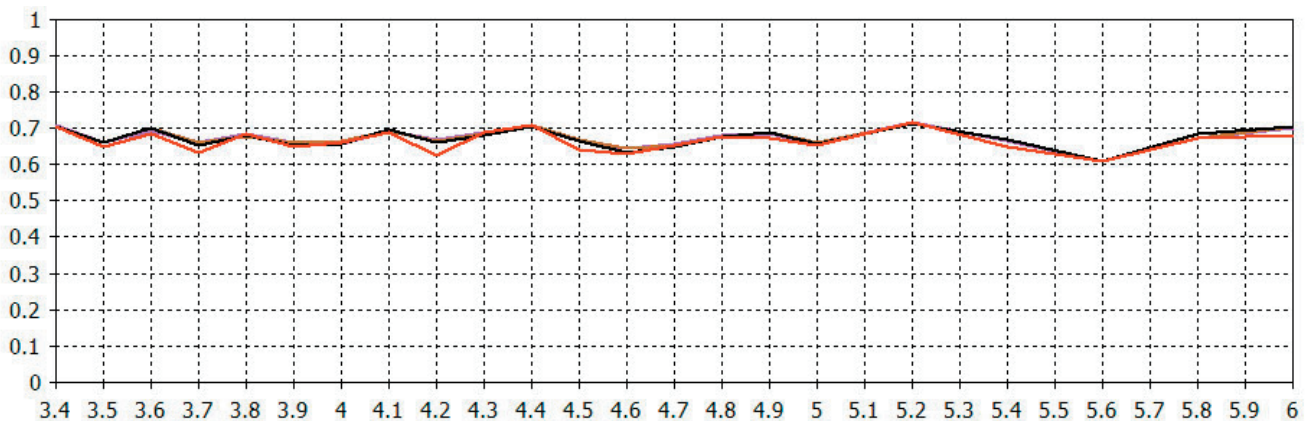
**Isolation measured in free space without cable.

Typical Swept Peak Gain ***



*** Swept peak gain simulated in CST Microwave studio for each element excluding cable loss

Typical Efficiency ****



**** Efficiency simulated in CST Microwave studio for each element excluding cable loss

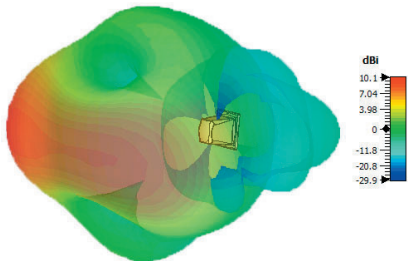
MiMo Directional 3.6/5.0GHz Antenna

WMM[X]9G-36-55-NJ

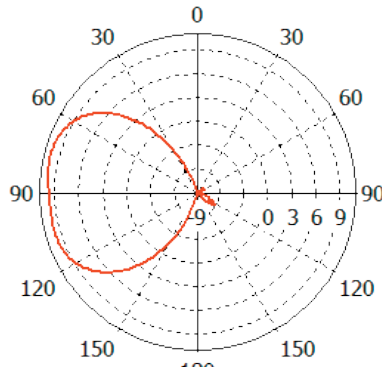
* Patterns simulated in CST Microwave studio based on 4x Elements fed together

Pattern Data 4x
Elements

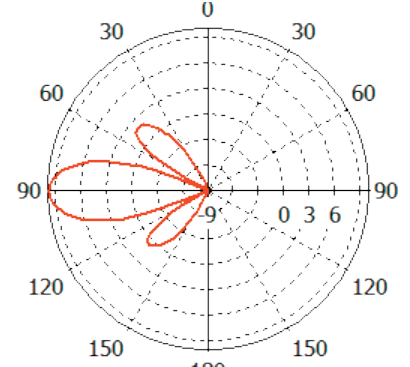
Typical 3D Pattern 3.6GHz*



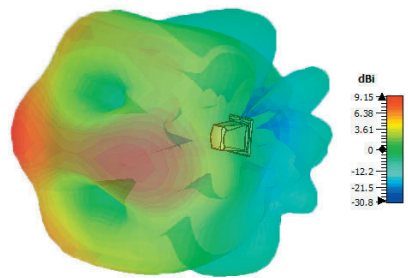
Typical E Plane Pattern 3.6GHz*



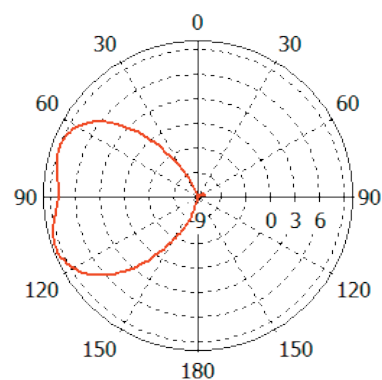
Typical H Plane Pattern 3.6GHz*



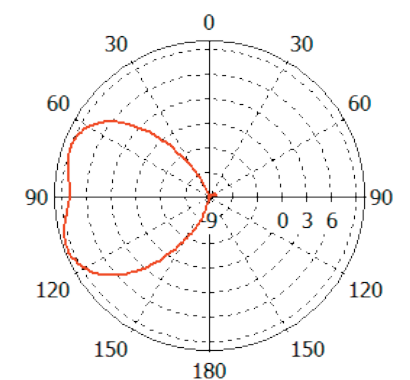
Typical 3D Pattern 5.4GHz*



Typical 3D E Plane Pattern 5.4GHz**



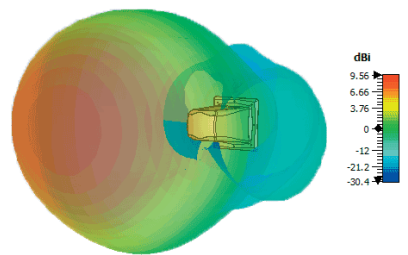
Typical H Plane Pattern 5.4GHz**



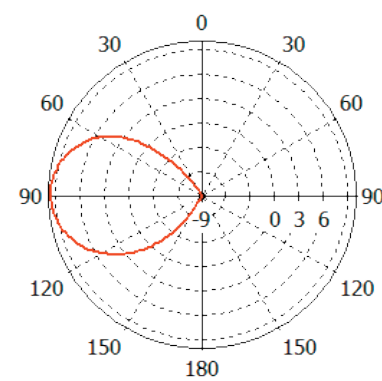
** Patterns simulated in CST Microwave studio based on one vertical element fed

Pattern Data Each
Element

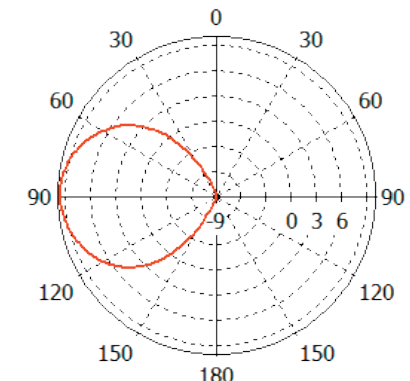
Typical 3D Pattern 3.6GHz**



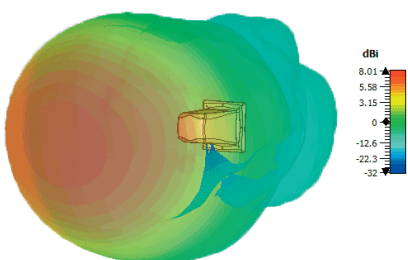
Typical E Plane Pattern 3.6GHz**



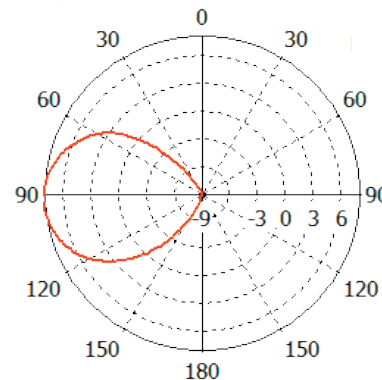
Typical H Plane Pattern 3.6GHz**



Typical 3D Pattern 5.4GHz**



Typical 3D E Plane Pattern 5.4GHz**



Typical H Plane Pattern 5.4GHz**

