

2G/3G/4G Bumper Mount Antenna

BMP1-7-27-[X]

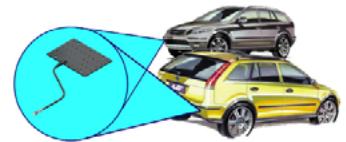


BMP1-7-27-5F

- Covert application
- Robust over moulded construction
- Designed to mount in vehicle bumper / fender

The Panorama Bumper Mount Antenna is designed for covert operations and other applications which require a vehicle antenna that is effectively invisible.

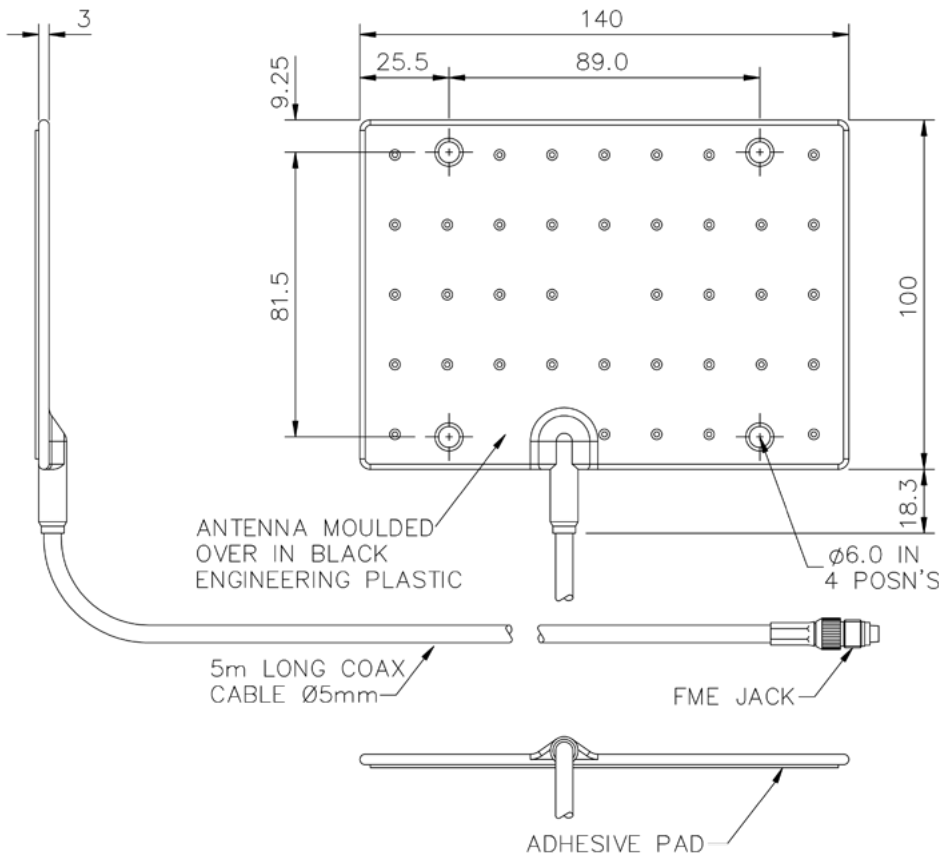
Mounted in the vehicle's bumper, installation requires no drilling and is invisible from the outside of the car.



Typical antenna positioning

Technical Drawing

BMP1-7-27-5F Shown



2G/3G/4G Bumper Mount Antenna

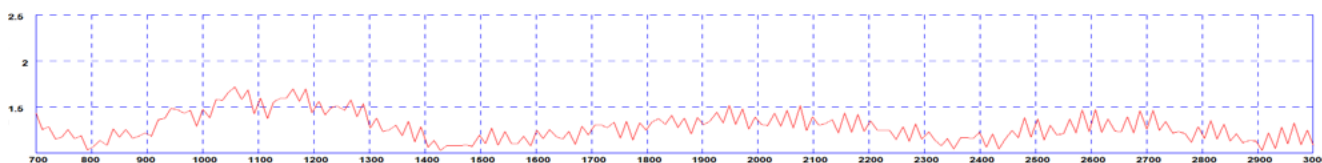
BMP1-7-27-[X]

Product Data

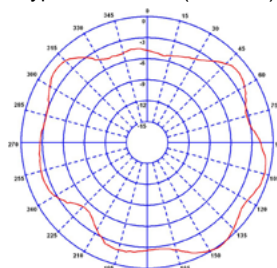
| Part No. | | BMP1-7-27-5F | BMP1-7-27-5SP |
|------------------------|-----------|-----------------------------------|---------------|
| Electrical Data | | | |
| Frequency Range (MHz) | | 698-960 / 1710-2700 | |
| Peak Gain: Isotropic | | 2dBi (in free space) | |
| Compared to ¼ wave | | 0dB (in free space) | |
| Typical VSWR | | ≤2.5:1 | |
| Polarisation | | Vertical | |
| Pattern | | Omni-directional (in free space) | |
| Impedance | | 50Ω | |
| Max Input Power (W) | | 25 | |
| Mechanical Data | | | |
| Dimensions (mm) | Length | 140 (5.5") | |
| | Width | 100 (3.9") | |
| | Thickness | 4 (0.2") (including adhesive pad) | |
| Operating Temp (°C) | | -40° / +80°C (-40° / 176°F) | |
| Material | | TPE | |
| Colour | | Black | |
| Mounting Data | | | |
| Fixing | | Adhesive pad & 4 × fixing holes | |
| Cable Data | | | |
| Type | | CS29 | |
| Diameter (mm) | | 5 (0.2") | |
| Length (m) | | 5 (16.4') | |
| Termination | | FME Socket | |

Typical VSWR*

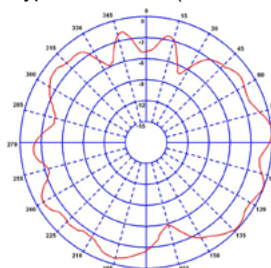
Electrical Data



Typical H-Plane* (900MHz)



Typical H-Plane* (1800MHz)



* All electrical measurements taken in free space with 5m (16.4') of cable. Exact installed position in bumper will affect patterns and VSWR response.