

TETRA UHF

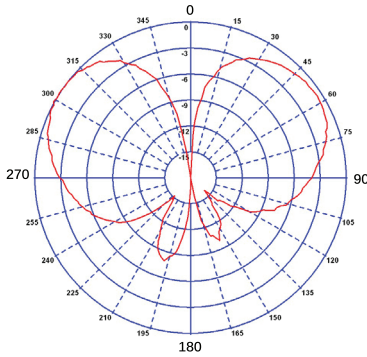
Flexible Whip

AFQHB-TET

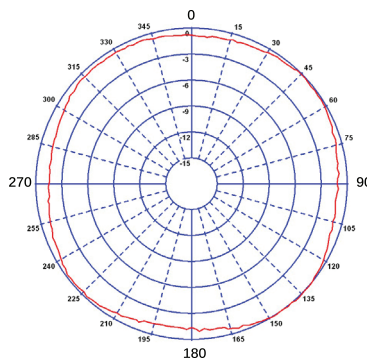
AFQB-TET

28/07/2011 v2

E-Plane (390MHz)



H-Plane (390MHz)



- Panel mount
- Flexible whip
- Removable for carwash

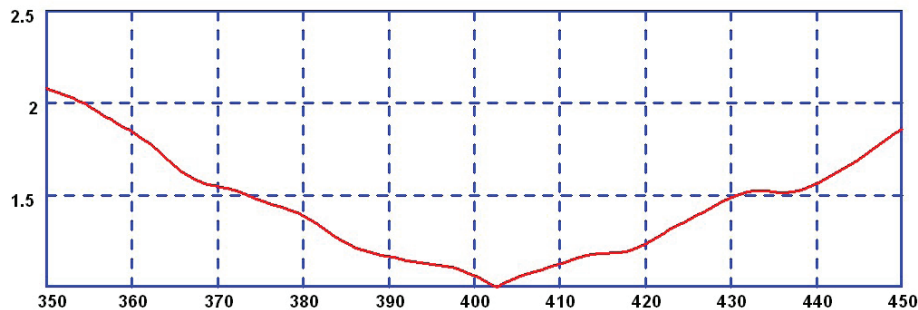


The AFQHB & AFQB antennas feature a flexible Quarter wave within a black nylon tube.* When fitted and tuned correctly these antennas will have a typical VSWR of 1.5:1 or less, guaranteeing a less drop out and better quality signal.

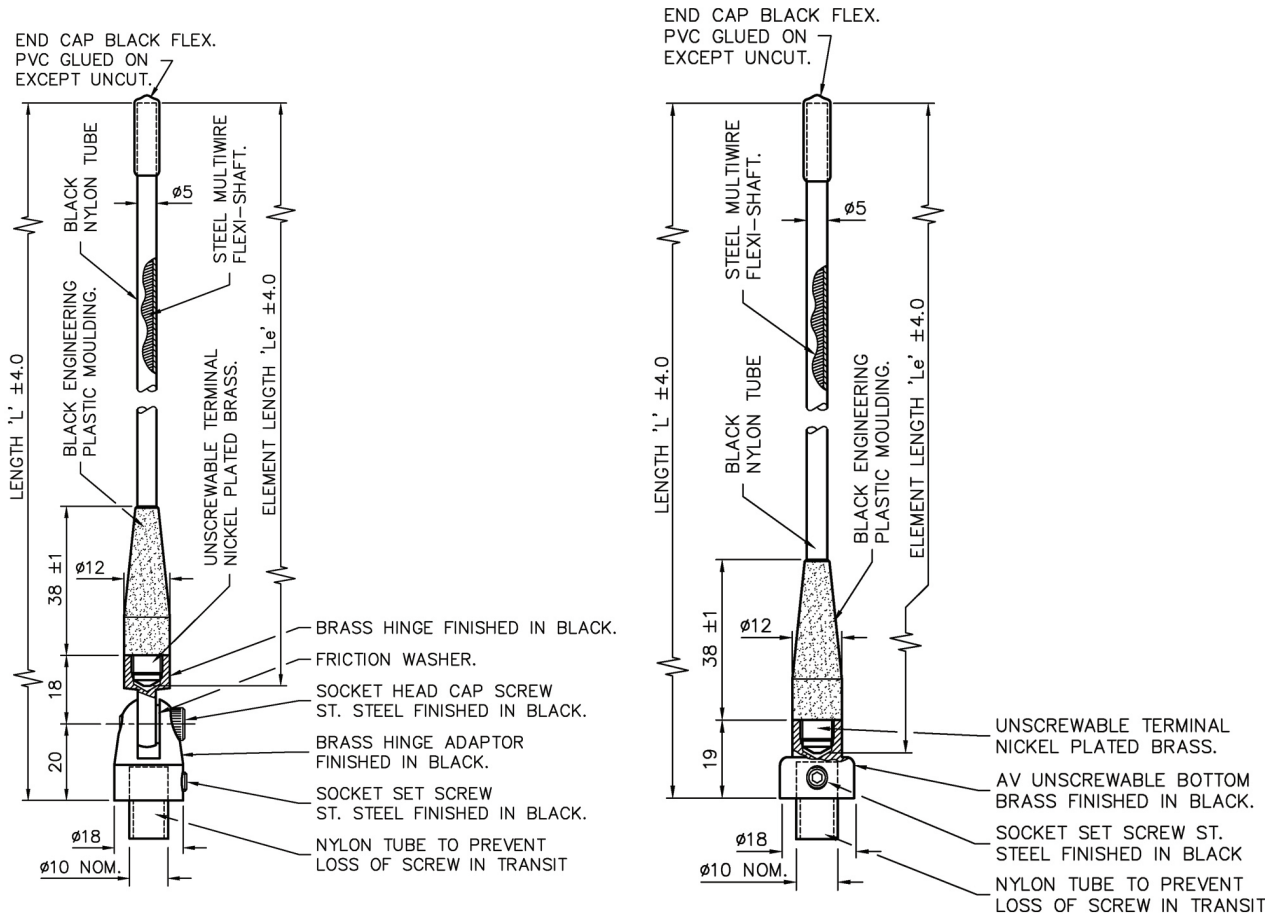
The Panorama mounting system provides a high degree of interchangeability between whips and bases, making them suitable for all applications whether temporary or permanent.

*Which provides a durable and stylish finish

Typical VSWR*



*measured on a 1m x 1m groundplane



Part No.

	AFQHB-TET	AFQB-TET
Electrical Data		
Frequency Range (MHz)	380-430	380-430
Operational Band	TET	TET
Gain: Isotropic	2dBi	2dBi
Compared to ¼ wave	0dB	0dB
Bandwidth @ 2:1 VSWR	10%	10%
Polarisation	Vertical	Vertical
Pattern	Omni-directional	Omni-directional
Impedance	50Ω	50Ω
Max Input Power (W)	50	50
Mechanical Data		
Dimensions (mm)	Total Height (L)	172 (6")
	Height of Whip (Le)	161 (6")
	Base Diameter	188 (7")
Operating Temp (°C)	-40°/+80°C (-40°/176°F)	-40°/+80°C (-40°/176°F)
Material	Stainless steel & engineering plastic	Stainless steel & engineering plastic
Colour	Black	Black



Panorama Antennas Ltd
Frogmore, London, SW18 1HF, United Kingdom

T: +44 (0)20 8877 4444
F: +44 (0)20 8877 4477
E: sales@panorama-antennas.com
www.panorama-antennas.com

Waiver: The data given above is indicative of the performance of the product/s under particular conditions and does not imply a guarantee of performance. These specifications are subject to change without notice.

Copyright © Panorama Antennas Ltd. All rights reserved.