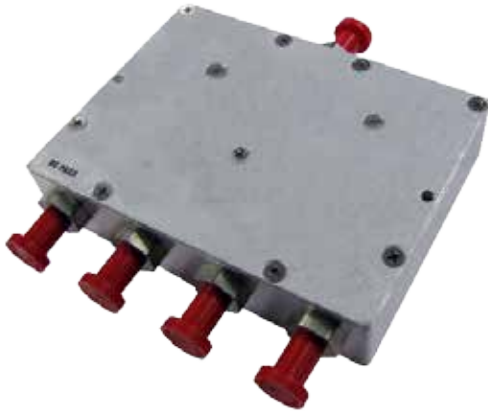


# GPS Four Port Power Divider

QPD-GPS

24/09//2013 V1

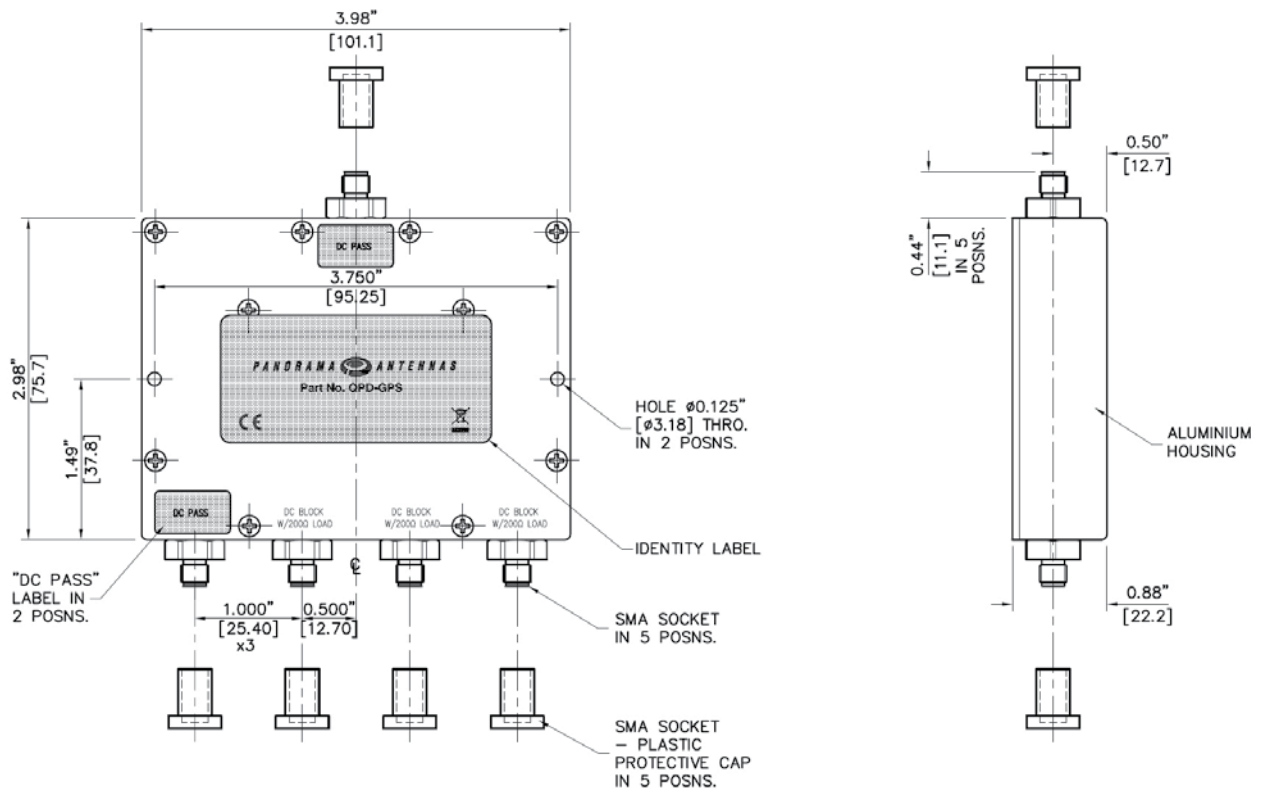


- Reduce installation costs
- Run four GPS receivers from a single antenna

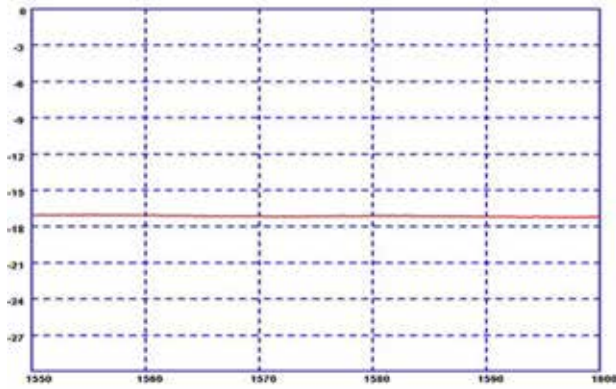
The Panorama QPD-GPS allows you to run up to four GPS receivers from only a single antenna. The QPD-GPS splits the received signal from the antenna to up to four receivers while only allowing one of the receivers to feed voltage to the antenna ensuring that the antenna is able to function correctly.

The QPD-GPS is perfect for ensuring that multiple compatible GPS receivers can be used in the same vehicle with the minimum number of antennas thereby reducing clutter and installation costs.

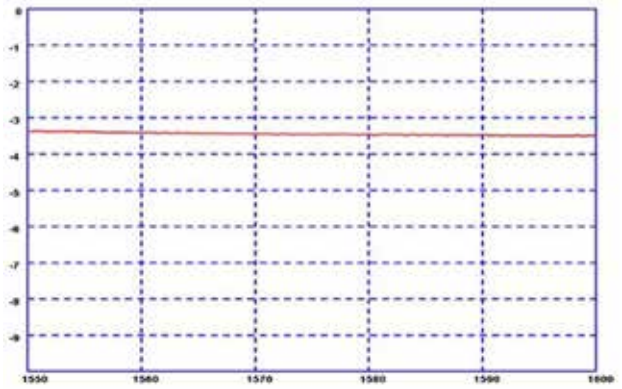
## Technical Drawing



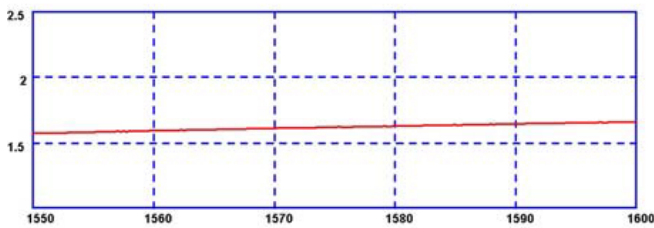
Isolation between GPS ports



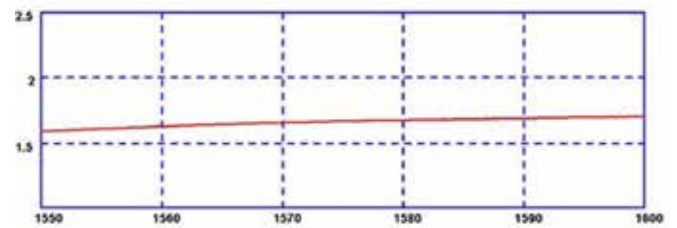
Insertion loss between antenna port to GPS ports



VSWR of GPS ports



VSWR of antenna ports



**Part No.**

QPD-GPS

**GPS Data**

Frequency Range (MHz)	1000-2000
Insertion Loss	0.6dB
Isolation between GPS ports	22dB
Impedance	50Ω
Max input power (W)	10
DC Feed voltage	10V (max)

**Mechanical Data**

Dimensions (mm)	Height	22.2 (0.8")
	Length	75.7 (2.9")
	Width	101.1 (3.9")
Operating Temp (°C)	-65°/+85°C (-40°/176°F)	
Material	Aluminium	
Colour	Silver	
Connectors	SMA Jack	



Panorama Antennas Ltd  
Frogmore, London, SW18 1HF, United Kingdom

T: +44 (0)20 8877 4444  
F: +44 (0)20 8877 4477  
E: sales@panorama-antennas.com  
www.panorama-antennas.com

Waiver: The data given above is indicative of the performance of the product/s under particular conditions and does not imply a guarantee of performance. These specifications are subject to change without notice.

Copyright © Panorama Antennas Ltd. All rights reserved.